



## SUITE 117 - 854 SF

NORTHAMPTON BUILDING | 3725 NATIONAL DRIVE, RALEIGH, NC

### PROPERTY FEATURES

- ▶ Available now!
- ▶ 3-7 year leases available
- ▶ \$23.50/SF full-service
- ▶ Upfit negotiable
- ▶ Ample free parking
- ▶ Located just inside the beltline on Glenwood Avenue
- ▶ 10 minutes from downtown Raleigh
- ▶ Minutes from RTP and RDU International Airport
- ▶ Connection to the City of Raleigh Greenway
- ▶ Sommelier's Roast Café now open in 3700 Glenwood
- ▶ Conference center and branch bank all located within the office park
- ▶ Tree-lined street with sidewalks connecting the buildings
- ▶ On-site professional property management

## GLENWOOD PLACE

*When it's all about location.*

Conveniently positioned along Glenwood Avenue, just inside the I-440 beltline, Glenwood Place currently contains everything you need for your workday, minutes from everything else. The 40-acre community encompasses nine commercial office buildings housing over 100 tenants and 296 upscale residential dwelling units, as well as 20,000 square feet of service retail.

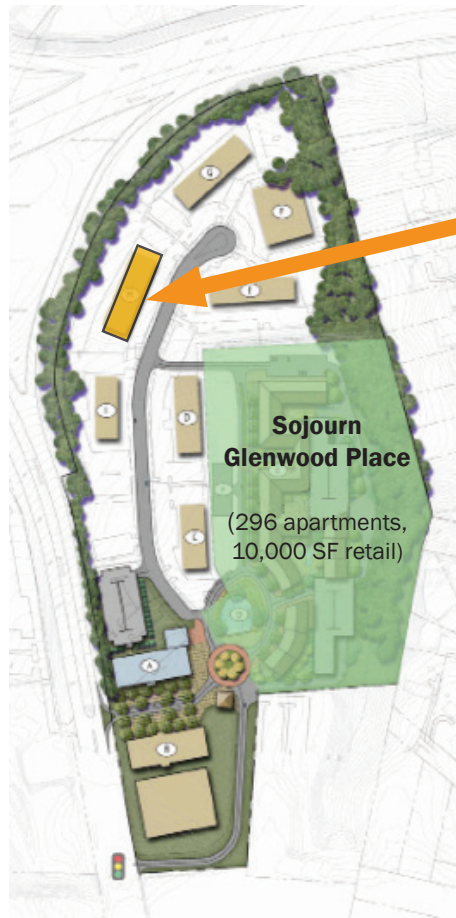
This premium location is a 15-minute commute to the Raleigh-Durham International Airport, five minutes to world-class shopping and dining at Crabtree Valley Mall, North Hills, Cameron Village Shopping Center, and Glenwood South.



MCKENZIE WILSON  
mwilson@grubbventures.com  
919.786.9905



# SITE MAP



**NORTHAMPTON BUILDING**  
Suite 117 – 854 SF

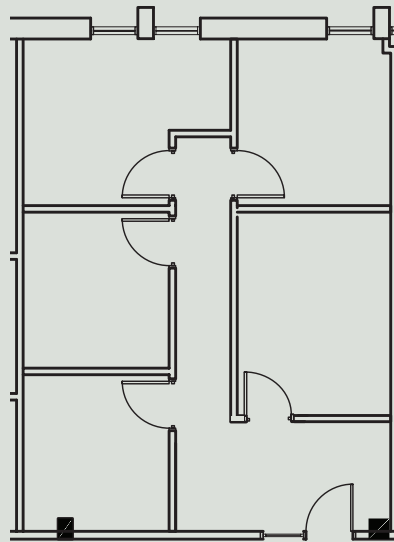
## BUILDING NAME

Camden  
Caswell  
Chatham  
Cumberland  
Dare  
McDowell  
Northampton  
3700 Glenwood

## ADDRESS

3724 National Drive  
3700 National Drive  
3716 National Drive  
3739 National Drive  
3733 National Drive  
3717 National Drive  
3725 National Drive  
3700 Glenwood Ave.

# SPACE PLAN



# FLOOR PLAN

