



## SUITE 215 - 4,780 SF

CAMDEN BUILDING | 3724 NATIONAL DRIVE, RALEIGH, NC

### PROPERTY FEATURES

- ▶ Available now!
- ▶ 3-7 year leases available
- ▶ \$23.50/SF full-service
- ▶ Upfit negotiable
- ▶ Ample free parking
- ▶ Located just inside the beltline on Glenwood Avenue
- ▶ 10 minutes from downtown Raleigh
- ▶ Minutes from RTP and RDU International Airport
- ▶ Connection to the City of Raleigh Greenway
- ▶ Sommelier's Roast Café now open in 3700 Glenwood
- ▶ Conference center and branch bank all located within the office park
- ▶ Tree-lined street with sidewalks connecting the buildings
- ▶ On-site professional property management

## GLENWOOD PLACE

*When it's all about location.*

Conveniently positioned along Glenwood Avenue, just inside the I-440 beltline, Glenwood Place currently contains everything you need for your workday, minutes from everything else. The 40-acre community encompasses nine commercial office buildings housing over 100 tenants and 296 upscale residential dwelling units, as well as 20,000 square feet of service retail.

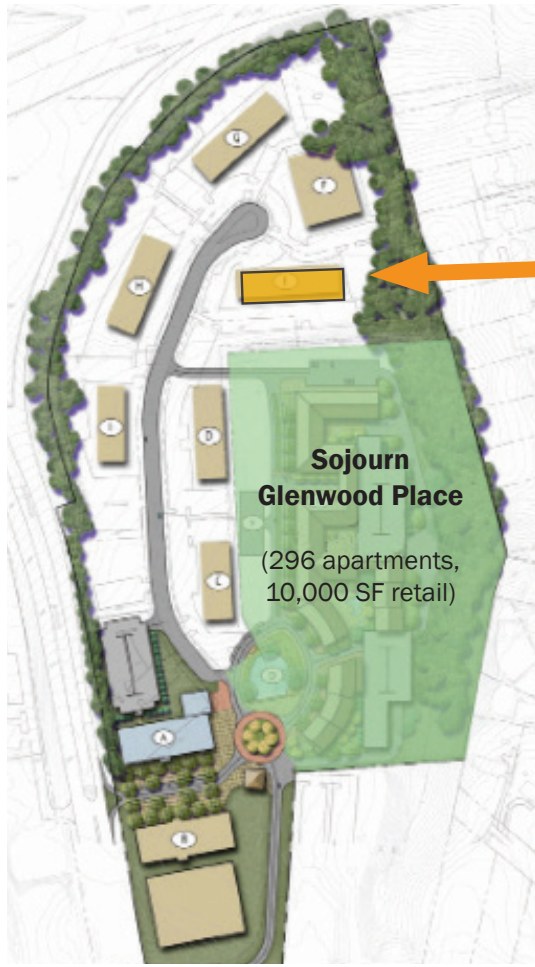
This premium location is a 15-minute commute to the Raleigh-Durham International Airport, five minutes to world-class shopping and dining at Crabtree Valley Mall, North Hills, Cameron Village Shopping Center, and Glenwood South.



**MCKENZIE WILSON**  
mwilson@grubbventures.com  
919.786.9905



# SITE MAP



**CAMDEN BUILDING**  
Suite 215 – 4,780 SF

**Sojourn  
Glenwood Place**

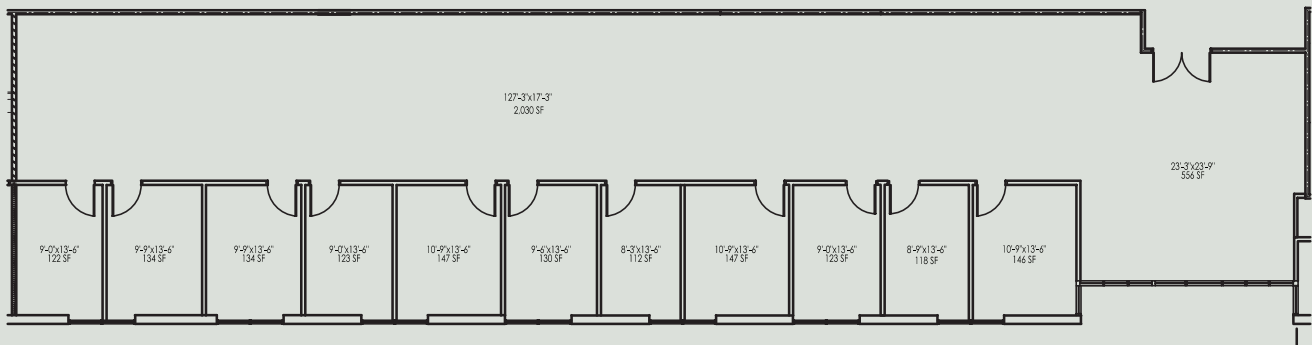
(296 apartments,  
10,000 SF retail)

**BUILDING NAME**

**ADDRESS**

Camden	3724 National Drive
Caswell	3700 National Drive
Chatham	3716 National Drive
Cumberland	3739 National Drive
Dare	3733 National Drive
McDowell	3717 National Drive
Northampton	3725 National Drive
3700 Glenwood	3700 Glenwood Ave.

# FLOOR PLAN



# KEY PLAN

